

23rd February 2023. Centre Cívic Casa Golferichs

The Catalan School System:

Types of schools and provision .

School year 2023-24

edubcn.cat

Suma't  a
 l'educació
que  suma
a  Barcelona

Preinscripció
escolar
2023-2024

Sessió informativa
per a les famílies

I3

 Consorci d'Educació de Barcelona
 Generalitat de Catalunya
 Ajuntament de Barcelona





Índex

01.

**Socio-cultural
context**

02.

**Organisation and
governance**

03.

**Education System:
Type of schools**

04.

**Network of schools
in Barcelona**

05.

**Some features
about the school
system**

06.

**Where to find out
more information**





1. Socio-cultural context

- Barcelona as a diverse, multicultural and open city. It attracts people from all over the world
- Barcelona as an Educating City. International Association of Educating Cities. City Resources
- Multicultural i plurilingual school environment (*ex: 30 foreign countries in a school and a wide range of languages*). It's a reflect of the reality in the city.
- Official languages : Catalan and Spanish
- Foreign languages in the school system: English, French, and German mainly
- Aules d'acollida (Welcoming classroom): learn Catalan and enhance social cohesion
- Foreign population:
 - Primary: 18% (2021-22)
 - Secondary: 13% (2021-22)





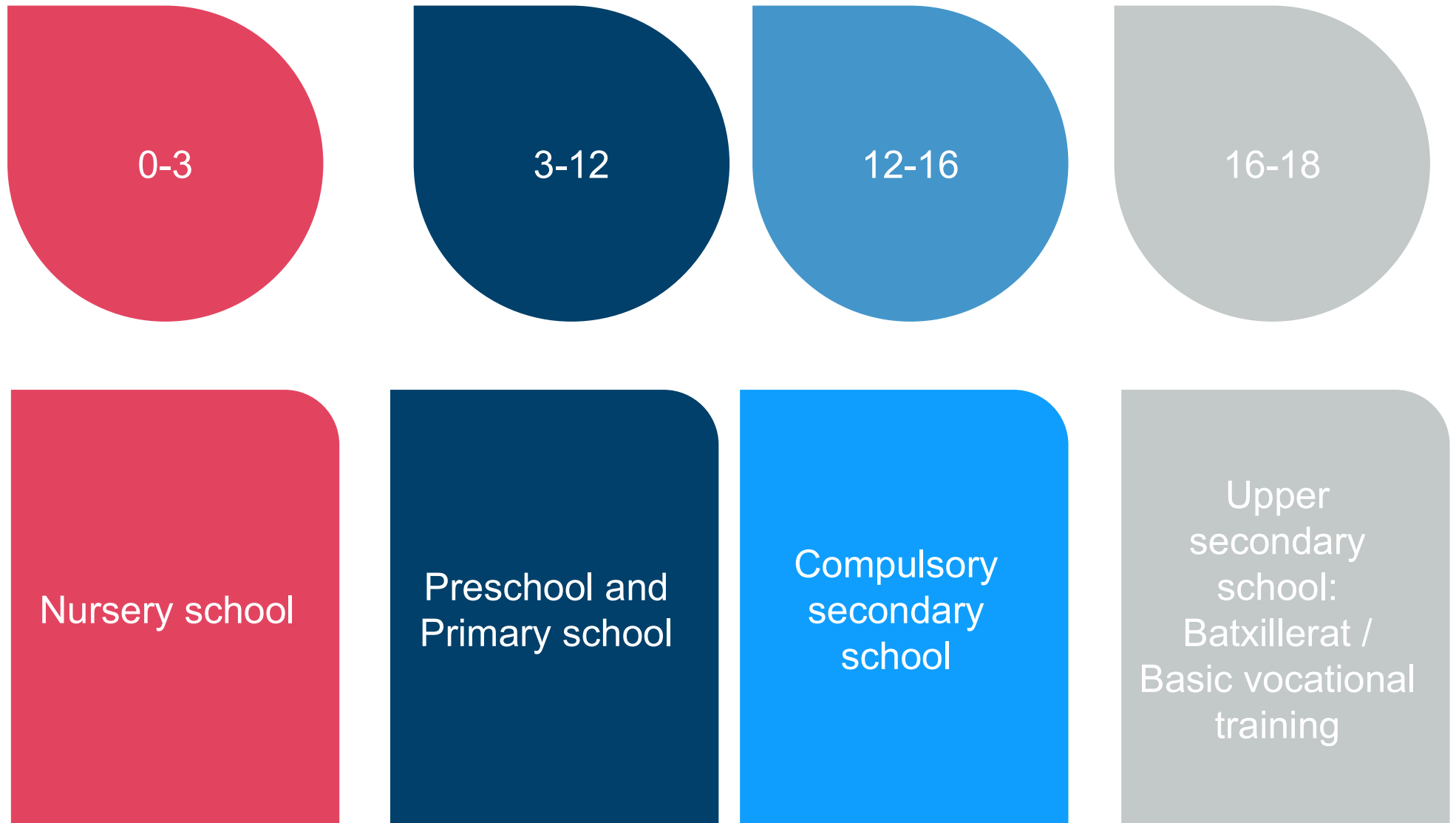
2. Organisation and Governance

- Decentralised System:
 - State
 - Autonomous Communities (Catalonia)
 - Local authorities
 - Schools
 - Consorci d'Educació de Barcelona (only in Barcelona)





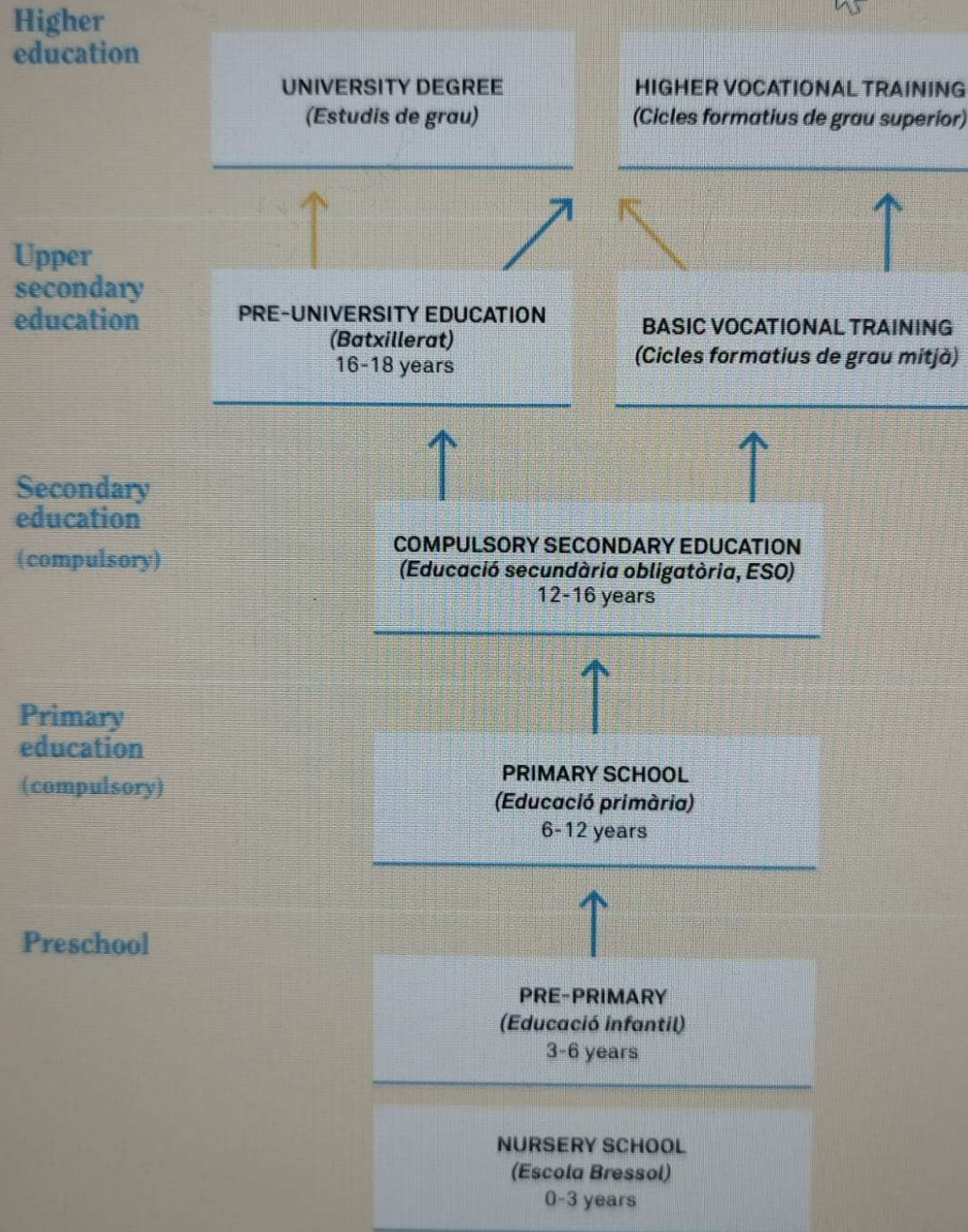
3. Education System. Type of schools





CATALAN SCHOOL SYSTEM: SIMPLIFIED CHART

→ Conditional access → Access test required





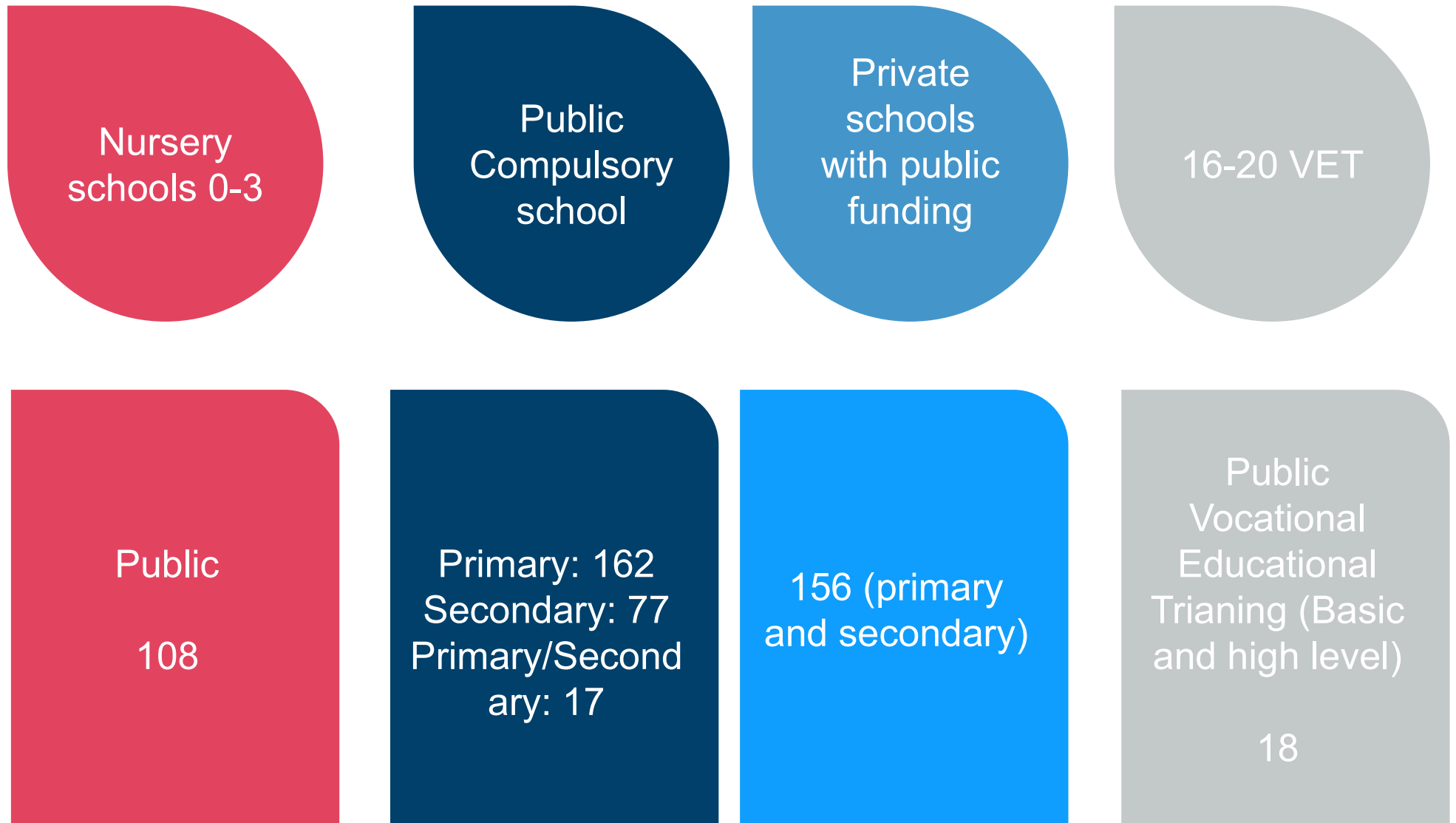


Types of schools

- Public schools
- State subsidised private schools
- Private schools



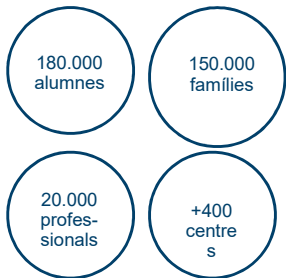
4. Network of schools in Barcelona





Everyone plays a role: Educational community

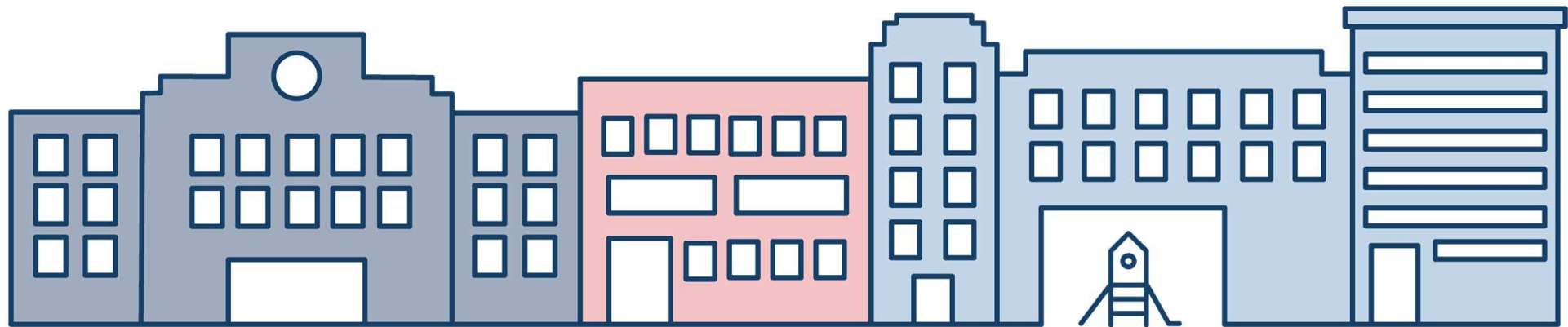
Fem equip a cada escola



Fem equip amb els i les professionals i recursos educatius



Fem equip a cada barri i la ciutat





Batxillerat – Bachelor's – Baccalaureat

Upper secondary education (16-18)

- Scientific / Technological
- Social / Humanistic
- Artistic
- General

It's 2 years

In their 2nd year they pass a national test to access to university or they apply to Higher Vocational Education training.

There are some public schools which offer the international Baccalaureat



Vocational training

PFI: Certificate of initial professional training – 1 year

Grau Mitjà : Medium Technician – 2 years- EQF Level 4 (Basic vocational training)

Grau Superior: Advanced Technician – 2 years – EQF Level 5 (High vocational training)

Students choose between different “sectors” or disciplines

Administration and management , Safety and environment , ICT , Trade and marketing , Socio-cultural and community services ,Health , Food industry , Transport and vehicle maintenance , Electricity and electronics , Wood manufacturing, Hospitality and tourism , Mechanical manufacturing, Energy and water, Personal image, Image and sound, Textile manufacturing, Chemistry, art and crafts, Dramatic art, Dance, Ceramics, Graphic Design, Sculpture and Sports



Other public studies besides the regular education system

Language schools.

The **Official Language Schools** are public centres dedicated to the teaching of languages to adults. The aim of those languages taught here is to develop:

- the student's ability to use a language effectively as a vehicle for general communication.
- the acknowledgement of and respect for linguistic and cultural diversity as a tool for dialogue between different peoples

Music schools

Music schools provide music lessons aimed at the initiation and training of children in this art, the preparation for access to the corresponding professional studies and the continuation of the non-professional artistic training and practice of people of more age

Professional music courses are structured in six academic courses, taught by conservatories and professional centers. Upon completion, the professional degree in music is obtained in the specialty studied.

Higher artistic music courses last four years and aim to train qualified professionals in the field of music; they are adapted to the European higher education area and are equivalent for all purposes to university degrees. The specialties offered are Composition, Conducting, Interpretation, Musicology, Pedagogy, Production and Management, and Sonology.

Lifelong learning. Adult schools

Adult education or lifelong learning includes learning activities that enable adults to develop skills, enrich knowledge and improve technical and professional skills. This means that people with different goals participate, such as obtaining a qualification, catching up or expanding their knowledge.



5. Some features about the school system

- Transition from Primary to Secondary schools
- Proximity
- Support to students with special and specific needs: inclusive education
- Attention to diversity in order to achieve equality and equity
- Program against school segregation
- Social staff in the schools with high vulnerability: community workers and other professional staff
- Promote digital skills
- Extra curricular activities (after school activities)
- Competence educational innovation. New methodologies, global projects and approaches



Education 2030: We have a plan to turn education into a future and city strategy



Adequació dels
equipaments



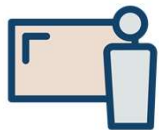
Pla
digital



Xarxes
professionals



Entorn i
extraescolars



Equips
educatius



Educació
inclusiva



Equitat i **lluita contra la
segregació**



Innovació educativa
competencial



6. Where to find out more information

- Consorci d'Educació de Barcelona

<https://www.edubcn.cat/ca>

- Departament d'Educació. Generalitat de Catalunya

<https://educacio.gencat.cat/ca/inici/>

ENS APUNTEM AL FUTUR

**PRE-ENROLLMENT
2023-2024**

**INFORMATION
SESSION FOR
FAMILIES**

**Welcome to the
educational
network**



We build a school network...

- Equivalents
- Proximity
- With quality and innovative projects
- With pedagogical continuity
- And for everyone: **equity and inclusion**



We have a plan to make education a future and city strategy



Adequacy of equipments



Digital Plan



Professionals Networks



Environment and extracurricular activities



Educational Teams



Inclusive education



Equity and the fight against segregation



Competence educational innovation

100% of public schools, in pedagogical innovation

All public primary schools and secondary schools are in the process of improvement and in programmes and networks of educational transformation. We promote quality educational projects to “learn to understand, and understand to transform”.



It is an educational success if it is for everyone

We work against segregation so that every child and young people has the same educational opportunities. The fact that each school is a reflection of its neighborhood promotes the educational success of all children.

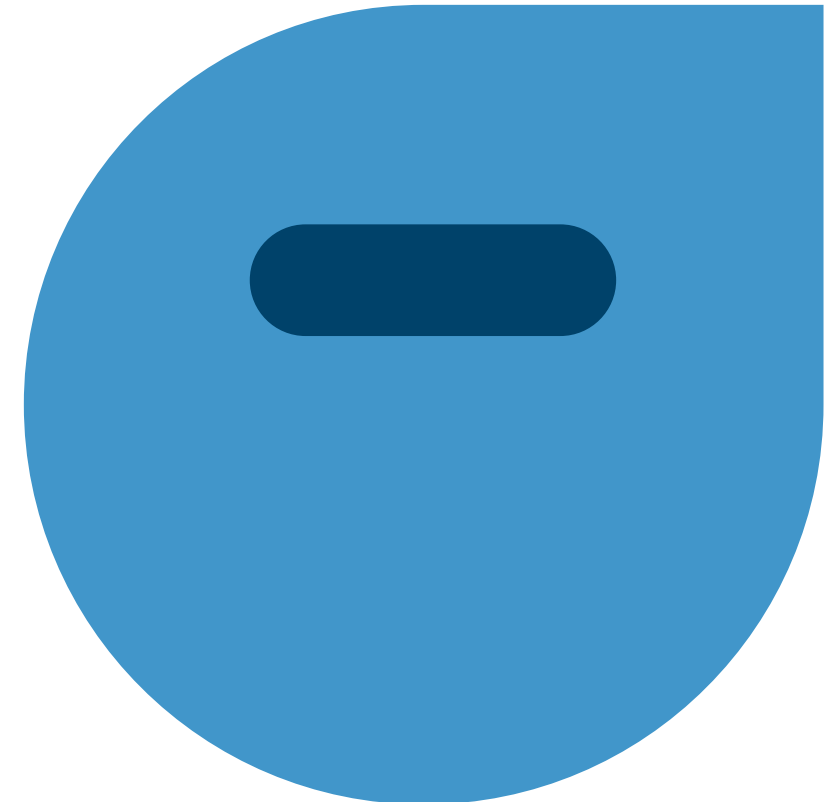
Therefore, we reserve places in each group for a balanced distribution of students who will need specific educational support. With different classrooms, we all win and prepare children and young people better for life.



We are committed to an inclusive education in an ordinary school

Because all children and young people are different, all schools and institutes are prepared to cater for any student with mild, moderate or high educational follow-up needs related to:

- Delays in child development or learning difficulties,
- Emotional health disorders and impairments
- Physical, visual, auditory, cognitive disabilities, and behavioral disorders, as autism...



Pre-enrollment process step by step





Pre-enrollment

Pre-enrollment is essential to get a place for your child in one of the more than 400 schools in the Barcelona education network supported with public funds.



From March 8th to the 20th



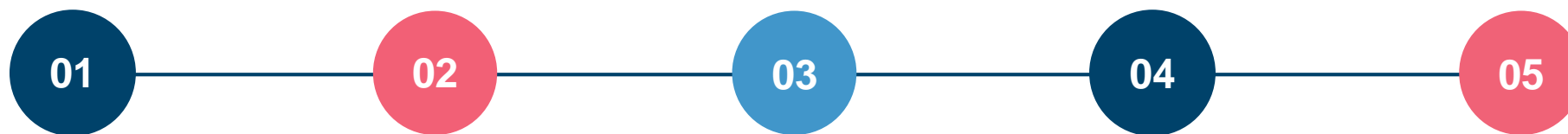
Enrollment

Enrollment is the confirmation of your child's in the place assigned to the new center.



From June 20th to 28th

5 steps



Initial information
From February to
March

Make a decision
March

**Submit the
application**
From March 8th to
20th

Do the rollment
From June 20st
to 28th

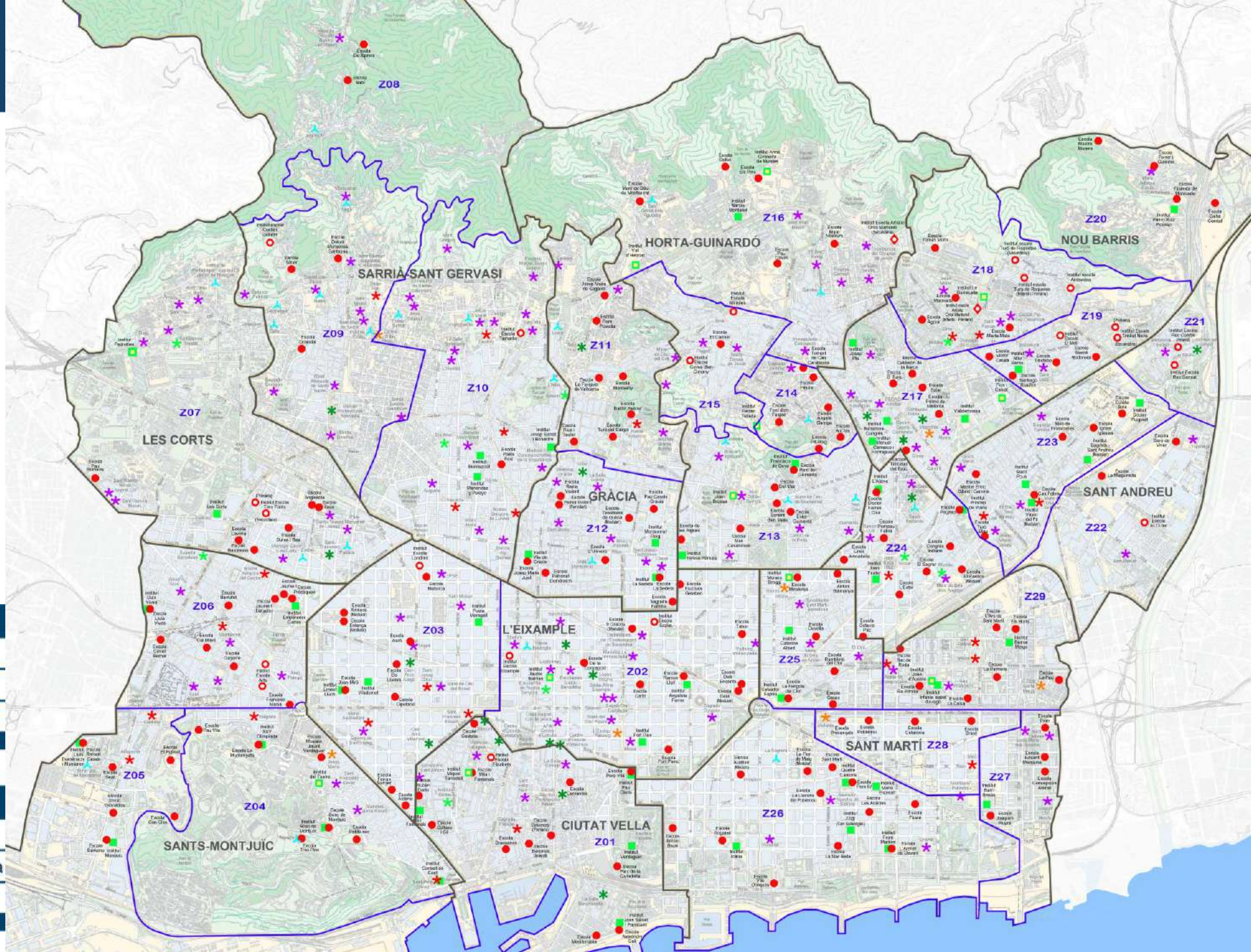
**Let's start the
new school year**
September

**We manage all the
applications**
From April to June

Time to find out



ENS APUNTEM AL FUTUR



EQUIPAMENTS EDUCATIUS PÚBLICS

- Escoles
- Instituts Escola
- Instituts

EQUIPAMENTS EDUCATIUS CONCERTATS

- ★ Centre Concertat Educació Infantil i Primària
- ★ Centre Concertat Educació Primària i Secundària
- ★ Centre Concertat Educació Secundària

Where to find out



edubcn.cat

Barcelona Education
Consortium

preinscripcio.gencat.cat

Department of Education

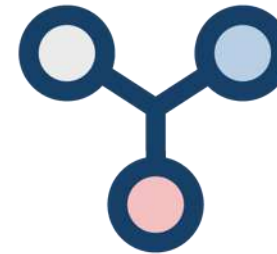


Schooling support offices

(by appointment)

Phone information

012 i 010



**Open house activities,
websites and social
networks of the centers**



**Families and
AFA**

edubcn.cat

Barcelona Education
Consortium website



Browser for open house
sessions



Local schools



Schools guide



Offer of schools places



What information is important

- Visit the schools
- Ask and contrast
- The continuity between primary and secondary education and the educational project
- Student's welcome and tutorial support
- Relationship between families
- How the process works
- The offer of places, taking into account siblings and places reserved for students with specific educational needs.
- The educational community

Provided by families

Necessary contributions*

Educational support material,
outings activities, summer camps

Public schools



Semi-private schools



Volunteers contributions*

AMPA/AFA fees



Additional services fee:

Dining service

Extra-curricular activities



Other non-mandatory contributions*

Additional hours fee

Foundations and cooperatives fees...



* **Students benefiting from “Pla de Xoc” against school segregation are exempt from all of these contributions.**

Visit, live and know about it

Every year educational projects change and improve.

Visit, live and get to know the schools in person to get a reliable impression and consider projects you may not know well enough.



How to make a decision?



preinscripcio.gencat.cat

Department of Education website



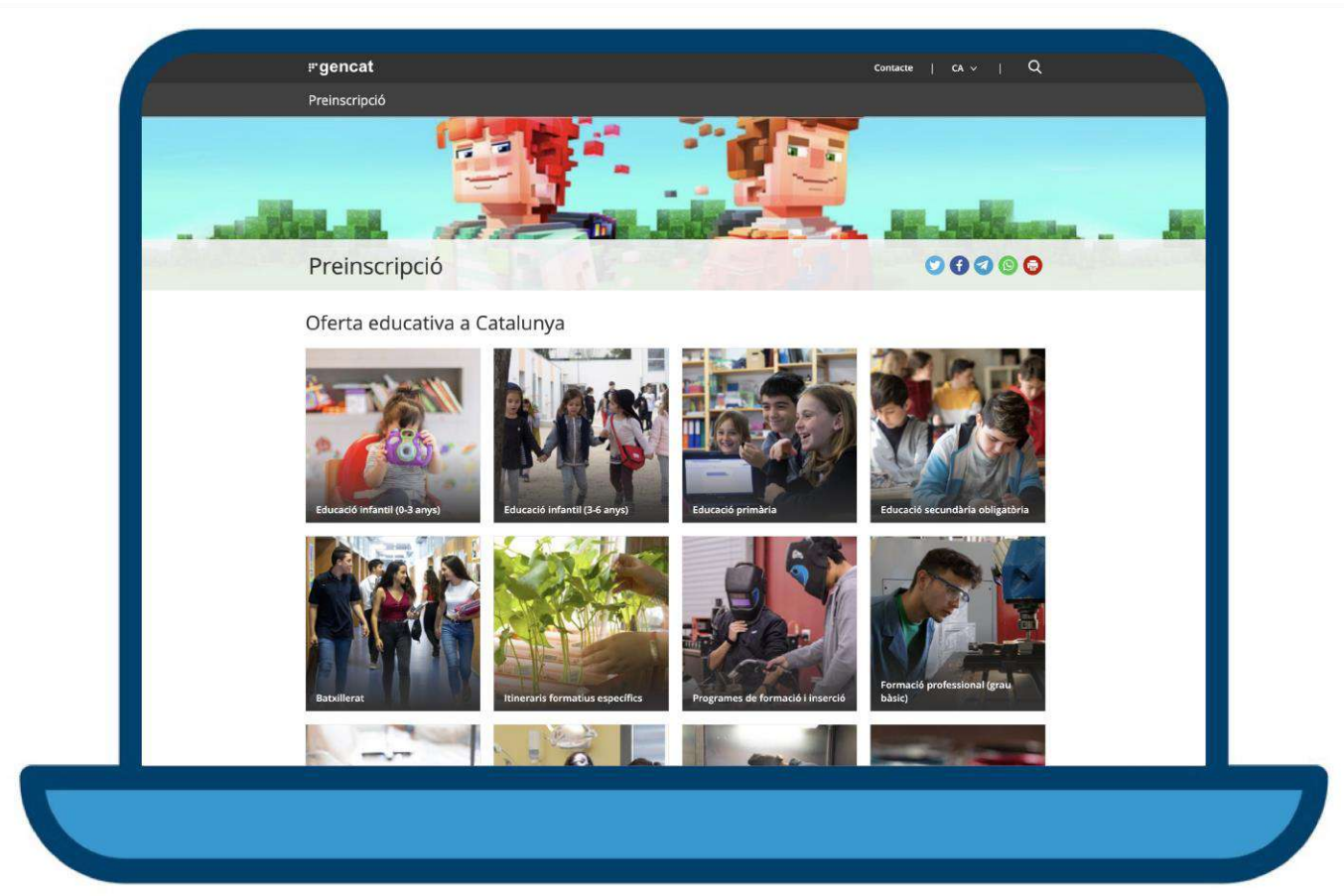
Pre-enrollment form online



All the information about the process



Help center with informative support materials (vídeo tutorial, podcast, pre-enrollment guide)



Schooling support offices



Information for families from March 1st

Support to online pre-enrollment from
March 8th (by appointment)

- By phone: **012** or **935 511 0 00**
- By internet: **www.edubcn.cat**

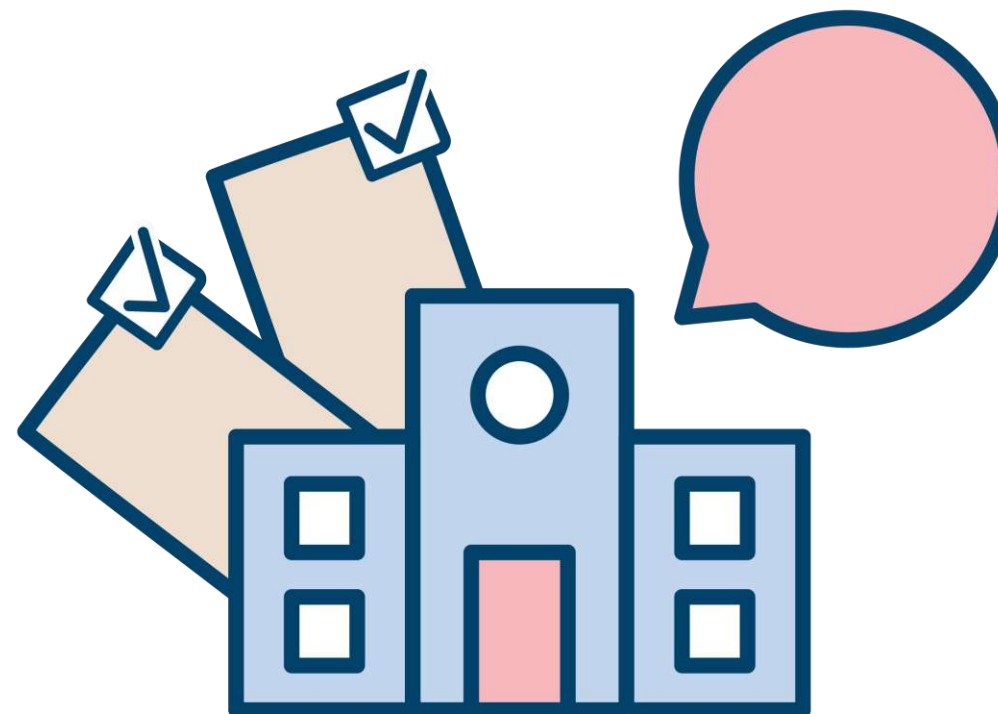
- **Ciutat Vella** (placeta del Pi, 2)
- **Eixample** (carrer de Roger de Llúria, 1-3)
- **Gràcia-Horta** (carrer de la Mare de Déu de la Salut, 87)
- **Nou Barris** (carrer de Nil, 27 i carrer de Vallcivera, 14)
- **Sant Andreu** (carrer del Montsec, 20-22)
- **Sant Martí** (carrer de Cristòbal de Moura, 223)
- **Sants-Montjuïc** (Sala Artur Martorell de l'IMEB, plaça d'Espanya, 5, planta baixa)

- **Oficina d'Atenció del Consorci d'Educació de Barcelona**
Carrer de Roger de Llúria, 1-3

All the schools in Barcelona offer very interesting educational projects

Mark the schools in order of preference and make your decision with that in mind:

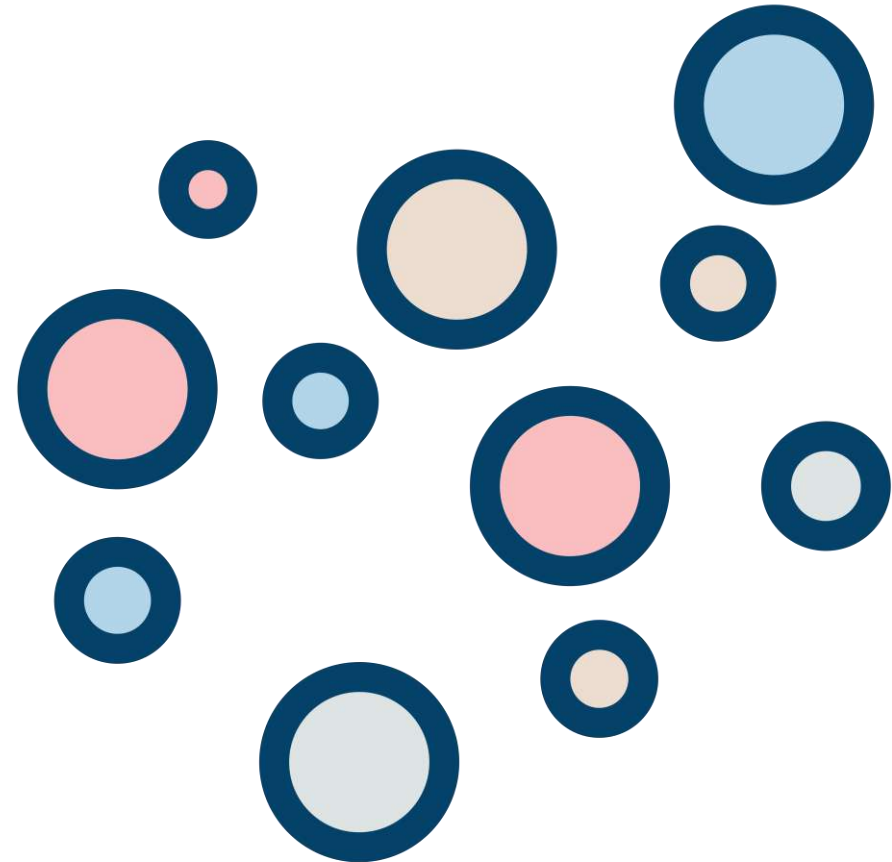
- Priority criteria
- About the offer of places
- Your preferences



The points system and the first option

The score is used to sort and break the deadlock when accessing a request school. The score is given to the school chosen in the first option.

This score is maintained in the other requested options.



Scale criteria

Priority criteria (A+B+C)

A	Siblings in the same school			
	50 POINTS			
B	Proximity to adress	Parents work adress	Same district of the school	Another adress in Barcelona
	30 POINTS	20 POINTS	15 POINTS	10 POINTS
C	Minimum Income			
	15 POINTS			

Complementary criteria (D+D...)

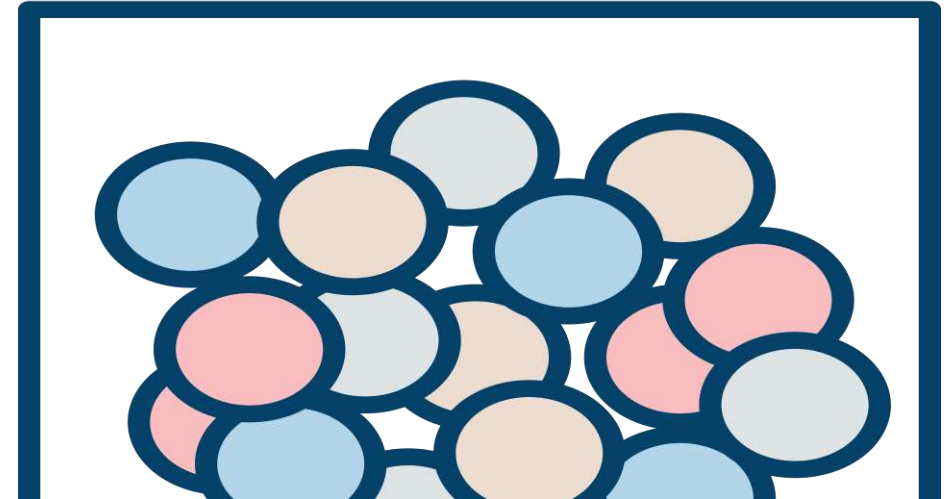
D	Disability of the children or parents	Father, mother or tutor working in the same school	Large family	Single-parent family
	15 POINTS	10 POINTS	10 POINTS	10 POINTS
	Children born in multiple labor	Students in foster care	Victims of gender-based violence or terrorism	
	10 POINTS	10 POINTS	10 POINTS	

The draw

In case of a tie (same points of priority and complementary criteria) the ordering of the requests is done by public draw.

The draw number (not the request identification number) will be the reference for allocating the place.

After the draw each school displays the list where the defined order appears. Except for students with specific educational needs.



Calendar: 10 very important moments

1. **Initial offer information.** On March 3th
2. **Term for submission of applications.** From March 6th to 20th (P3 -6PRI) and from March 8th to 20th (ESO)
3. **Provisional scaled lists.** On April 21st
4. **Term of claims.** From April 21nd to 27th
5. **Draw: tiebreaker number.** On May 3rt
6. **Final sorted lists.** On May 9th
7. **Extension of requests.** From May 29th to June 1st
8. **Final offer of places.** On June 9th
9. **Assignment lists and wating lists.** On June 12th
10. **Rollment.** From June 20st to 28th



How to submit the application?



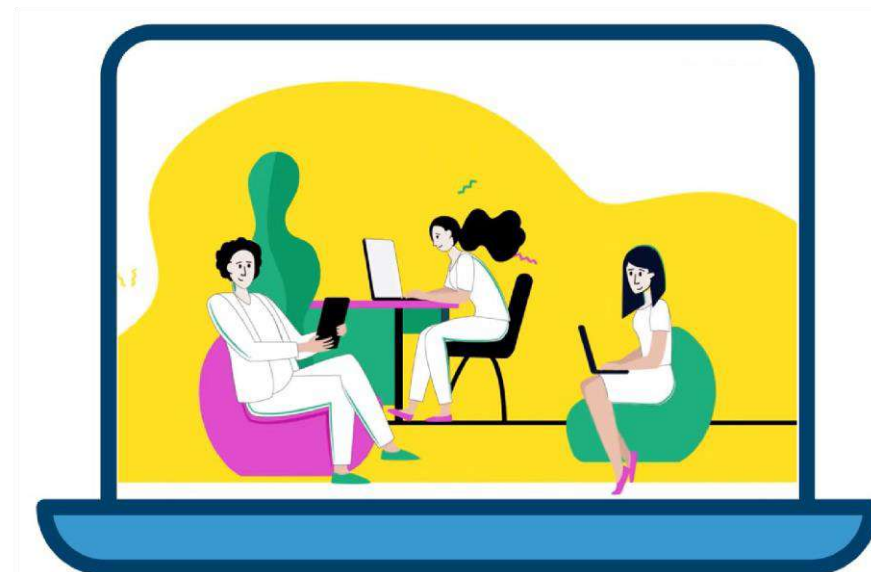
The pre-enrollment application must be submitted online

preinscripcio.gencat.cat

You can do this from any computer, tablet or mobile phone with internet connection.

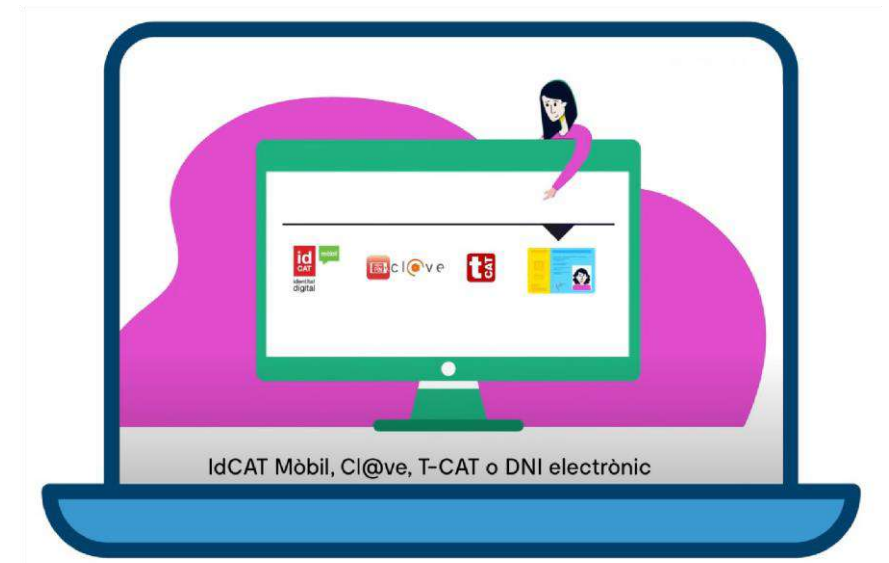
You can find two types of applications in the pre-enrollment website:

- E- application
- With a computer support



How to identify yourself?

- **E- application:** With digital identification (T-CAT, DNle, sistema CI@ve o idCat Mòbil). This one is the safest option.
- **Application with a computer support:** In this case, you will need to prove your identity by attaching you DNI, NIE, Passport or ID of the UE member country previously scanned or photographed.



What documentation do you need to attach to the application?

The family book or other documents related to the affiliation, previously digitized, only in the case that the student has not been schooling in Catalonia before.

If the student is already schooled in Catalonia and has the identity number of the student register of Catalonia (RALC) It will not be necessary to attach these documents as the data will be recovered automatically.

Finally, it will also be necessary to present the documents to give credit to the scoring criteria of the scale that you allege.



Pre-enrollment for a reserved place

With specific educational needs:

Check option A

For mild needs, emotional health impairments, or physical, visual or hearing impairments, and we will assess your own situation.

Check option B

If you consider that you are currently having family financial difficulties and we will assess your own situation

Make a decision with confidence

A whole network we will make a team so that children and young people can grow and develop with all the opportunities offered by a city like Barcelona.

Thanks for being part of the team!

